

Rhetoric of Written Argument in Context

CONTACT
Office: SH 120B
jsheppard@mail.sdsu.edu

CLASS MEETINGS
T & TH
11:00-12:15
Meets in COM 205

OFFICE HOURS
M 3-4
T & W 2-3:30
& by appointment

MATERIALS
Required: None, PDFs will be provided
Recommended: Ann Raimes' A Key for Writers (7th ed.)

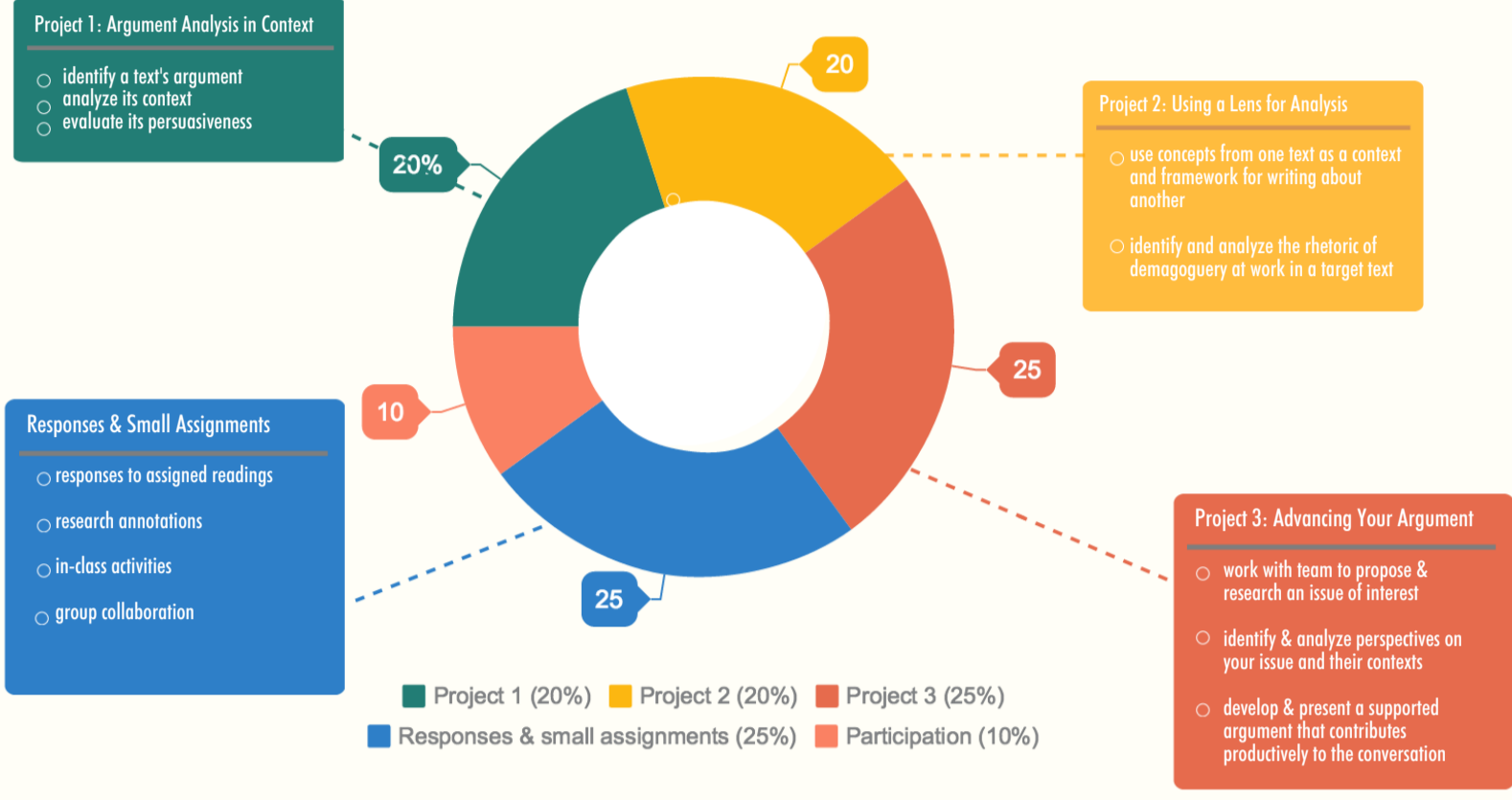
consider how context shapes arguments

evaluate strengths and weaknesses

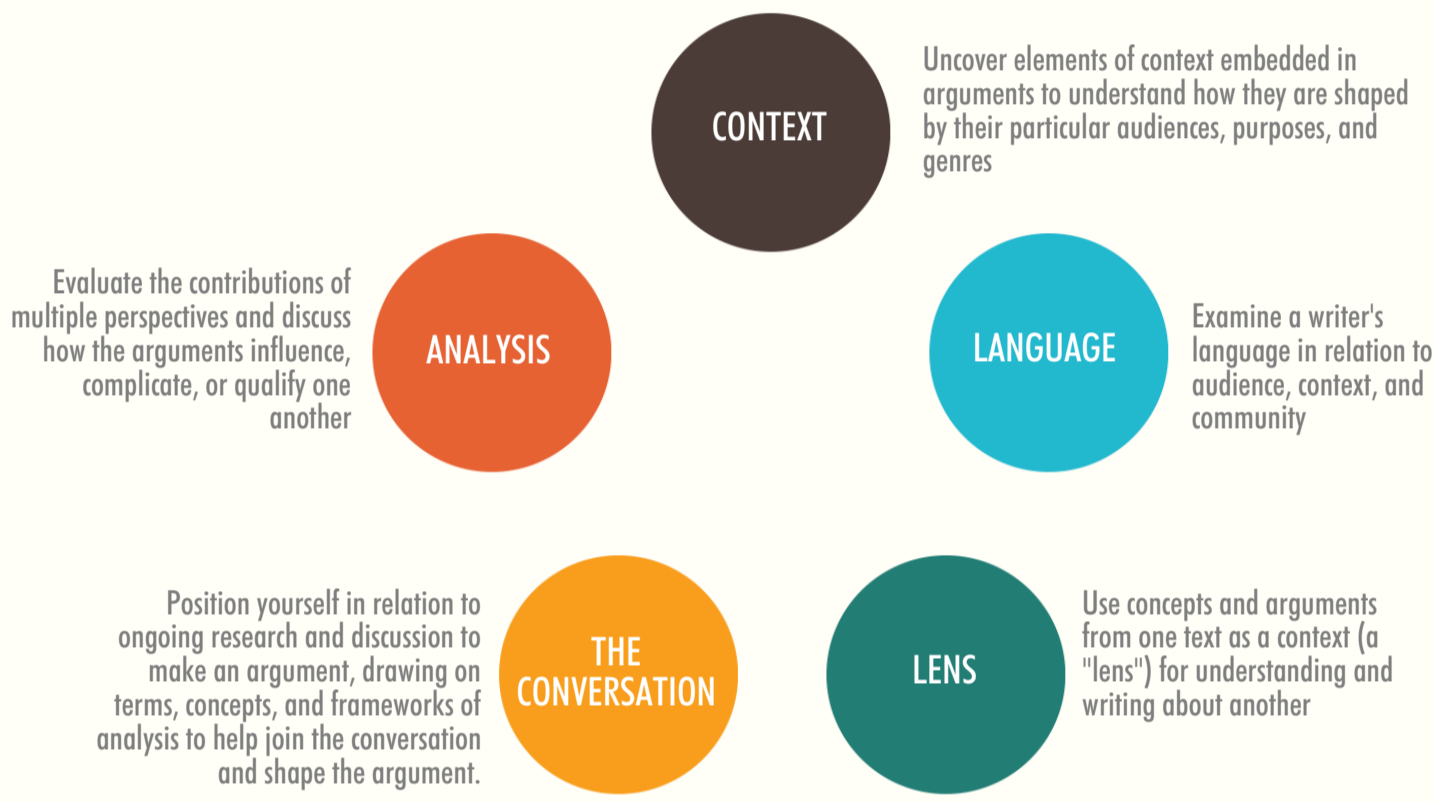
synthesize relationships between texts

make your own arguments

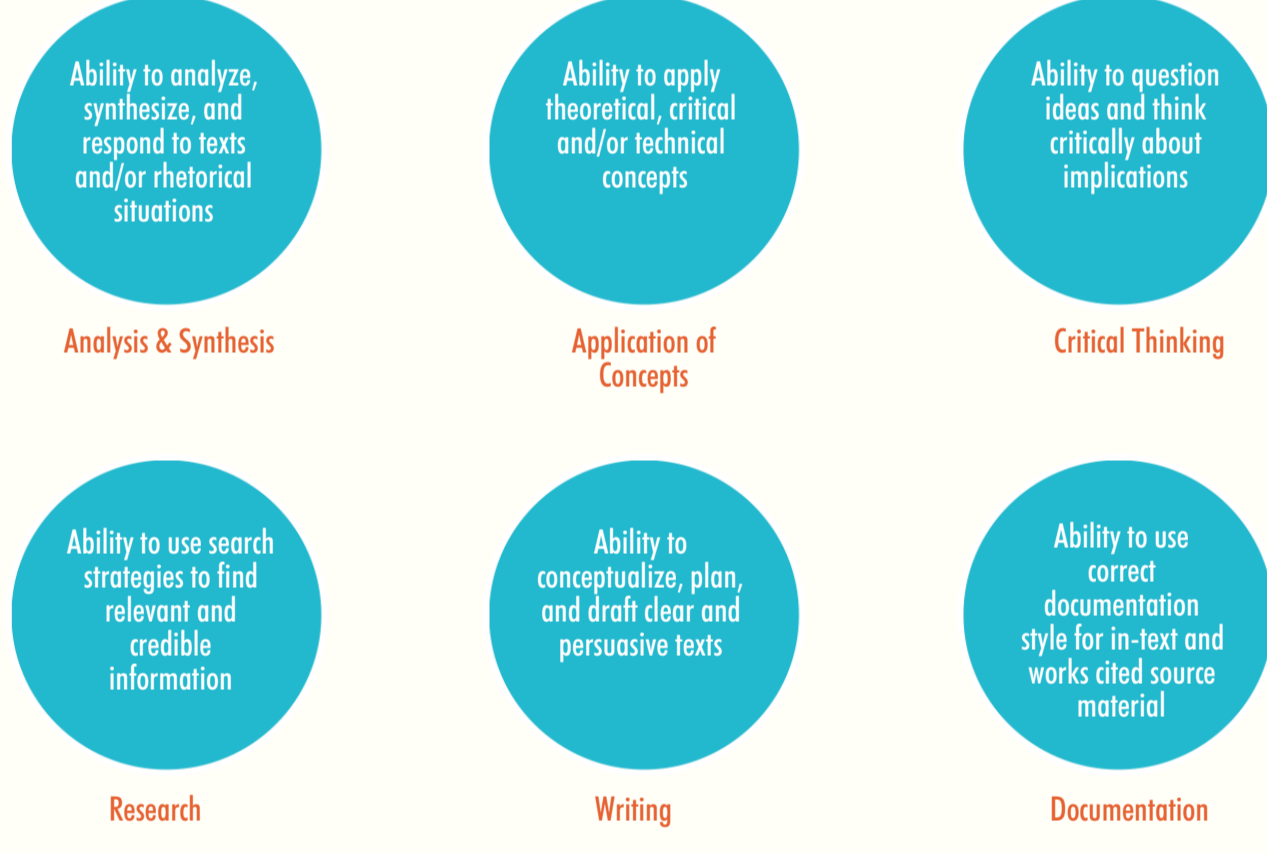
Assignments & Points



LEARNING OUTCOMES



General Grading Rubric



POLICIES

PARTICIPATION
Discussion-based course
Requires preparation & ACTIVE engagement
Read all material, respond to writing prompts, & engage in thoughtful discussion with your classmates

ATTENDANCE
Be here!
Missing up to 3 classes = ✓
Missing more than 6 class = F
Being late = 🗨️

PROFESSIONAL ETIQUETTE
Professional and respectful behavior
Encourage participation, don't shut it down
Use tech for class only

LATE WORK
Accepted only with prior request for extension
Not accepted when more than 2 weeks overdue

HELPFUL RESOURCES
SBSU Writing Center in in Love Library Appointments available at the Writing Center Online
Purdue Online Writing Lab (OWL)

QUESTIONS & PROBLEMS
Communicate with me
I want you to succeed- help me to help you

SUPPORT

STUDENTS WITH DISABILITIES
Reasonable accommodations for students with disabilities in this course are offered. Students with disabilities who may need accommodations are encouraged to make arrangements & to contact Student Disability Services (SDS) in the Capulli Center in Suite 3101 or at (619) 594-6473.

COUNSELING
SDSU Counseling & Psychological Services that is open to students M-F 8am-4:30pm. For initial consultation, call (619) 594-5220. For immediate or emergency help, use San Diego's free 24-hour counseling access line at (800) 479-3339.

MORE POLICIES

1 STUDENT ATHLETES
I am committed to helping you succeed in the course, but we must maintain regular and effective communication to make arrangements. For more information on SASS' academic advising and tutoring services, please call (619) 594-4743.

DISCRIMINATION/HARASSMENT
This is a discrimination- and harassment-free zone. Our classroom is a safe, collegial space where differences of identity, background, and perspective are treated with consideration and respect. Disagreement is expected as part of the learning process, but should always be expressed with collegiality.

ACADEMIC HONESTY
All work in this course must be original. Plagiarism will result in serious consequences including grade reduction, failure in the class or expulsion. See the cheating and plagiarism policy, please visit: <http://www-rohan.sdsu.edu/dept/senate/policy/pfacademics.html>.